

## LiberoPro Wok Induction 1 Phase, drop in - UK Plug

ITEM # \_\_\_\_\_

MODEL # \_\_\_\_\_

NAME # \_\_\_\_\_

SIS # \_\_\_\_\_

AIA # \_\_\_\_\_



600904 (E1HCEDOMCU)

\* NOT TRANSLATED \*

### Main Features

- Plug in unit designed for drop in installations.
- 2-color user interface (white and red) for better readability.
- Automatic pan detection to transfer power only when pan is present.
- Glass touch display on top for maximum visibility.
- Power level settings from 1 to 10.
- Timer function can be used to set the cooking time, switching off the zone automatically at the end of the time set.
- High impact, heavy duty glass-ceramic wok bowl for durability and easy cleaning.
- Self-diagnostics: an error code is displayed (Exxx) in case of dysfunction.

### Construction

- Heavy duty AISI 304 Stainless steel construction.
- One induction wok shaped bowl with couvette diameter of 290mm and 6mm thick.
- Cord and plug included.
- IPX4 water resistance certification.

### Sustainability



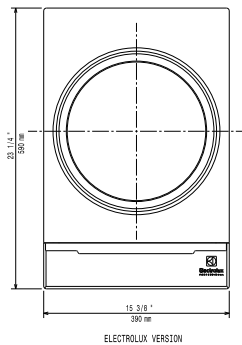
- Rapid heat transfer directly to the pan, no heat is dispersed into the environment.
- [NOT TRANSLATED]

### Optional Accessories

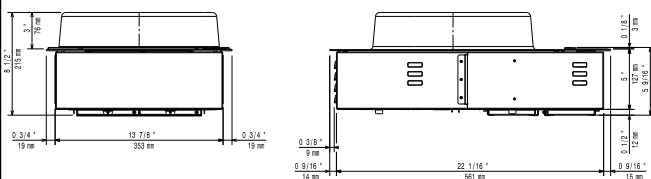
- - NOT TRANSLATED - PNC 650146 ☐
- - NOT TRANSLATED - PNC 650147 ☐
- Stainless steel induction Wok pan with stainless steel handle (diam. 350mm) PNC 653595 ☐
- Induction Wok pan with wooden handle (diam. 360mm) PNC 910613 ☐
- Induction Wok pan with stainless steel handle (diam. 360mm) PNC 911587 ☐
- Stainless steel lid for Wok pan diam. 360mm PNC 911588 ☐

APPROVAL: \_\_\_\_\_

Top

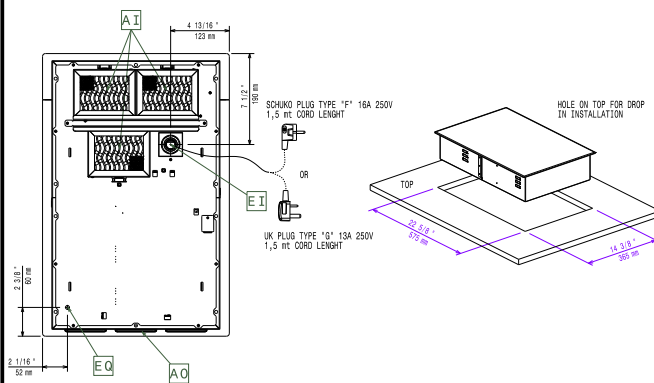


Side



EI = Electrical inlet (power)  
 EO = Electrical Outlet

Other



### Electric

Supply voltage:	220-240 V/1N ph/50-60 Hz
Total Watts:	3 kW
Plug type:	UK-13A
Minimum Circuit Ampacity (MCA):	13A

### Key Information:

Top area width:	400 mm
Top area depth:	397 mm
External dimensions, Width:	392 mm
External dimensions, Depth:	592 mm
External dimensions, Height:	203 mm
Net weight:	16 kg